

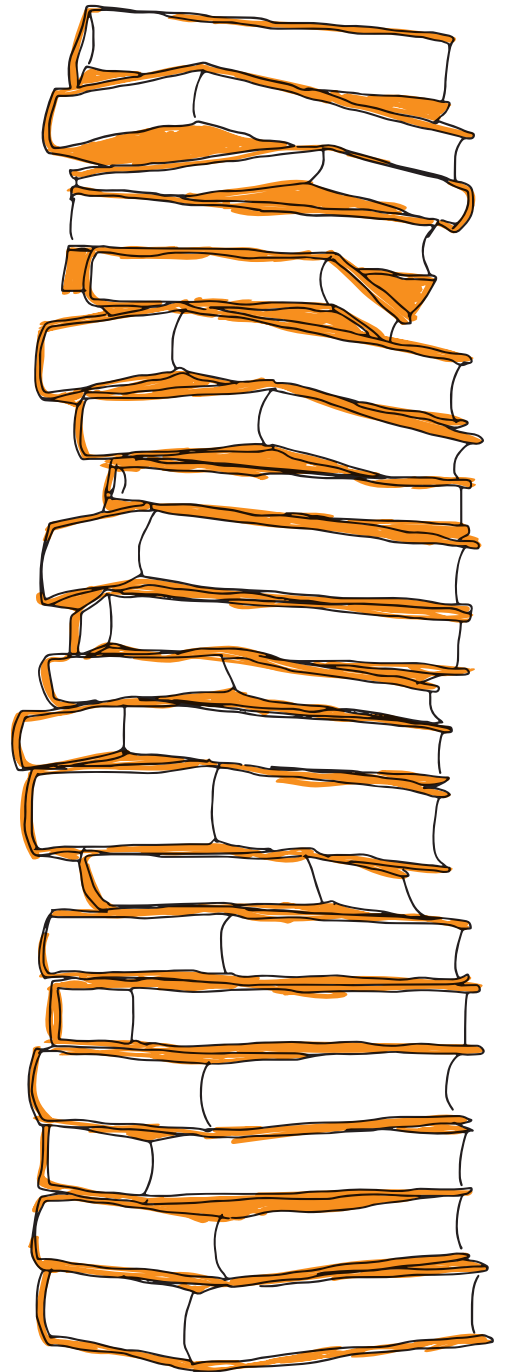


CRAM CREW

ACT[®]

CRAM MANUAL

Fourth Edition



MATH

2

Functions

1. If $f(x) = x^2 + 4x - 7$, then what is the value of $f(-3)$?
- A. 28
 - B. 10
 - C. 0
 - D. -10
 - E. -28
2. Let $g(x) = 3x^2 + 4$. For what value of x does $g(x) = 16$?
- F. -2
 - G. 0
 - H. 1
 - J. 3
 - K. 5
3. Let $f(x) = x^2 - 6x + 3$. For which of the following values of x does $f(x) = -6$?
- A. -5
 - B. -3
 - C. -1
 - D. 1
 - E. 3
-

Algebraic Operations

1. Which of the following is equivalent to $(3x + 2) + (4x - 7)$?
- A. $3x - 9$
 - B. $7x - 5$
 - C. $7x + 5$
 - D. $-x - 9$
 - E. $-x + 5$
2. Which of the following is equivalent to $(3x + 2)(4x - 7)$?
- F. $7x^2 + 8x - 14$
 - G. $7x^2 - 21x - 5$
 - H. $10x^2 + 5x - 15$
 - J. $12x^2 - 13x - 14$
 - K. $13x^2 - 29x - 14$
3. Which of the following is equivalent to $(6x - 3)(x + 7)$?
- A. $6x^2 - 4x - 21$
 - B. $6x^2 + 39x - 21$
 - C. $6x^2 + 13x + 21$
 - D. $6x^2 - 4x + 21$
 - E. $6x^2 + 39x + 21$

Factoring

1. Which of the following is equivalent to $x^2 - 11x + 24$?

- A. $(x-12)(x+1)$
- B. $(x-8)(x-3)$
- C. $(x+6)(x-4)$
- D. $(x-6)(x-5)$
- E. $(x+12)(x-2)$

2. Which of the following is equivalent to $x^2 - x = 6$?

- F. $(x-6)(x+1) = 0$
- G. $(x-2)(x+3) = 0$
- H. $(x+6)(x-1) = 0$
- J. $(x+2)(x-3) = 0$
- K. $(x+6)(x+1) = 0$

3. Which of the following is equivalent to $12x^2 - 12x - 10$?

- A. $(6x+10)(x-2)$
- B. $(3x+5)(4x-2)$
- C. $(6x-10)(2x+1)$
- D. $(3x-10)(4x+1)$
- E. $(3x-5)(4x+2)$